



Research · education · art · innovation

NEU BULLETIN

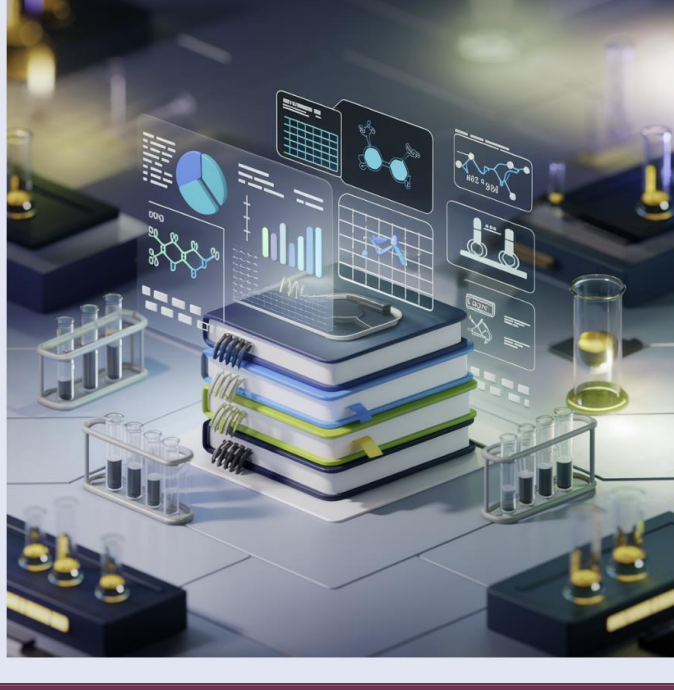
YEAR 2025

ISSUE #4

recent publications

Researchers at Near East University are driving impactful advancements across a wide range of disciplines. By tackling real-world challenges, they combine expertise from diverse fields to develop innovative and practical solutions.

Discover the latest research initiatives and explore how our academics are making a meaningful difference locally and on a global scale.



[read more](#)



Trending research

Business Administration

The role of transformational leadership in enhancing competitive advantage for E-business analysis in organisational practices

Language and Linguistics

Effects of voice onset time and place of articulation on perception of dichotic Turkish syllables

Engineering

Performance analysis of a wavy fin-and-tube automobile radiator operating on ethylene glycol and water based ternary nanofluids

Biotechnology

Chitosan and its derivatives: A novel approach to gut microbiota modulation and immune system enhancement

[read more](#)

Research centers



Societal Research and Development Center

The Societal Research and Development Center at Near East University is a pioneering institution dedicated to addressing pressing social challenges through interdisciplinary research and innovative projects. With a focus on inclusivity, sustainability, and societal well-being, the Center bridges academic expertise with real-world applications.

[read more](#)

Innovation

Visionary Glasses is a wearable device being developed by Near East University researchers to assist visually impaired individuals. Equipped with AI-powered object detection and auditory feedback, it aims to enhance environmental awareness and support independent navigation.



[read more](#)

artademics



Assoc. Prof. Gökhan Okur is a faculty member at the Near East University Faculty of Fine Arts and Design, Department of Graphic Design, and an artist affiliated with the Cyprus Museum of Modern Arts. With a career rooted in graphic design and printmaking, Okur emphasizes aesthetic and formal expressions in his artistic creations.

[read more](#)

Interview



senior researcher

Prof. Dr. Evren Hınçal, the Vice Dean of the Faculty of Arts and Sciences and Head of the Department of Mathematics, has a distinguished career in mathematical modeling, focusing on cancer statistics, epidemiology, and infectious diseases.

[read more](#)

YOUNG RESEARCHER

Assoc. Prof. Dr. Youssef Kassem, a faculty member in the Department of Mechanical Engineering at Near East University, is recognized for his expertise in renewable energy systems, thermo-fluid mechanics, and artificial intelligence applications.



[read more](#)

EMPOWERING FUTURE LEADERS

The 21st Century Skills Course at Near East University is designed to equip students with essential competencies. Through experiential learning methods like interactive workshops and real-world projects, the course bridges the gap between academic knowledge and professional application, preparing students for the challenges of a rapidly evolving global workforce.



[read more](#)

STUDENT CLUBS



Nutrition and Dietetics Student Club

The Nutrition and Dietetics Student Club is a vibrant community dedicated to promoting the importance of healthy living and sustainable nutrition. Through educational events, social activities, and impactful projects, the club fosters collaboration and awareness, empowering students to make a positive difference for both personal and planetary health.

[read more](#)

WHAT'S NEW IN EDUCATION



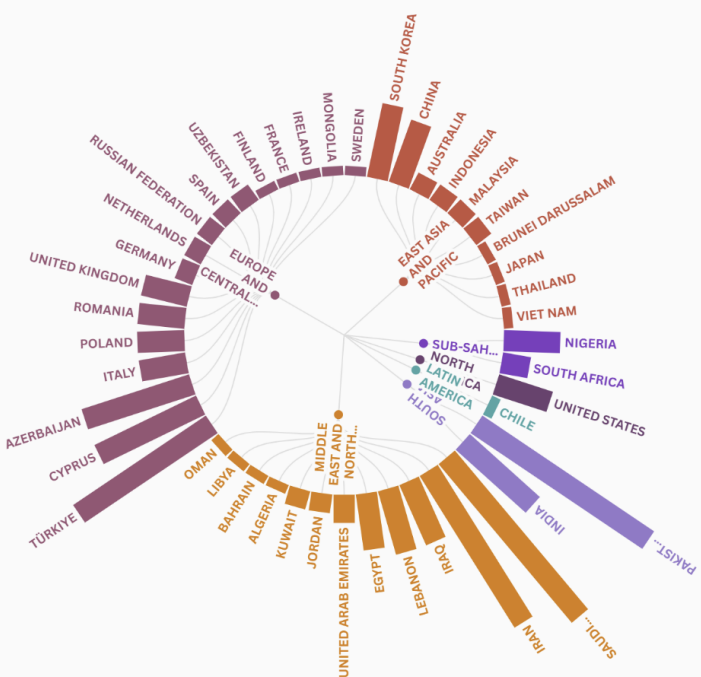
Faculty of Artificial Intelligence and Informatics

The newly established faculty aims to lead advancements in artificial intelligence and informatics, offering programs designed to prepare students for the evolving demands of technology-focused careers. With a strong emphasis on research and practical applications, the faculty provides a dynamic environment where students can explore the potential of AI and its impact on various industries.

[read more](#)

COLLABORATIONS

Near East University engages in collaborations with institutions and researchers worldwide, supporting knowledge sharing and multidisciplinary studies. These partnerships contribute to the advancement of science and education, highlighting the university's dedication to progress.



NEAR EAST UNIVERSITY: GLOBAL COLLABORATION NETWORK
JANUARY - FEBRUARY 2025

[read more](#)

NEU IN RANKINGS



[read more](#)

EDITORIAL TEAM

Advisor

Prof. Dr. Mustafa Kurt

Content Editors and Designers

Prof. Dr. Umut Aksoy & Prof. Dr. Sevcan Kurtulmuş Yılmaz



Near East University

Near East Boulevard ZIP: 99138 Nicosia / Northern Cyprus