

NEU Bulletin

NEAR EAST UNIVERSITY
NORTHERN CYPRUS



Research · education · art · innovation

NEU BULLETIN

YEAR 2025

ISSUE #5

recent publications



At **Near East University**, our researchers are making significant strides in various fields, addressing real-world challenges with innovative solutions. By leveraging expertise from multiple disciplines, they work collaboratively to create impactful advancements that drive positive change.

Explore the latest research projects and learn how our scholars are contributing to meaningful progress both locally and globally.

[read more](#)



Trending research

Chemical Engineering

Optimization algorithms for modeling conversion and naphtha yield in the catalytic co-cracking of plastic in HVGO

Health Informatics

A systematic review on the impact of artificial intelligence on electrocardiograms in cardiology

Dentistry

Deep learning-driven segmentation of dental implants and peri-implantitis detection in orthopantomographs: A novel diagnostic tool

Civil Engineering

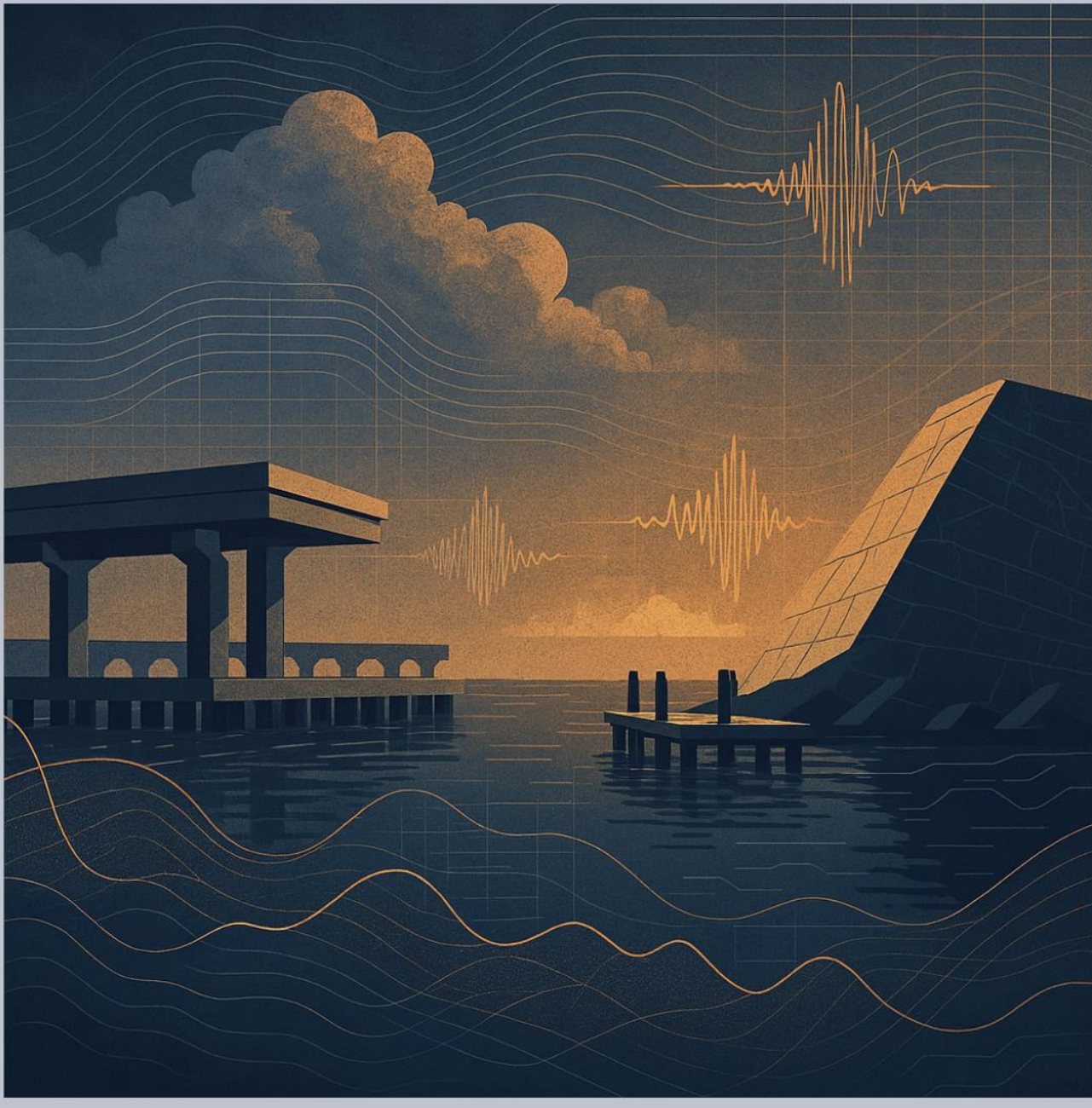
Optimization of strength and durability properties of rubberized concrete mixtures containing silica fume using Taguchi method

[read more](#)

symposium

Marine Engineering: From Routine to Crisis

Near East University recently hosted a symposium focused on resilience and innovation in marine engineering. Organized by the Faculty of Civil and Environmental Engineering in collaboration with NERITA, the event brought together experts to explore how the field adapts from routine operations to emergency scenarios.



[read more](#)

artademics

Prof. Erdal Aygenç is the Dean of the Faculty of Fine Arts and Design at Near East University. With a career that spans decades and bridges disciplines, Prof. Aygenç offers deep insights into the evolving role of the artist-academic, the importance of critical engagement in art and design, and the meaning of creating with intention.



[read more](#)

Innovation



Revolutionizing Beekeeping via a Smart Beehive

Developed by the **Near East University AI and IoT Research Center**, the Smart Beehive is transforming traditional beekeeping. This innovative system combines AI, IoT, and renewable energy to improve hive health and boost honey production.

[read more](#)

award winning academics



Prof. Dr. Fadi Al-Turjman, recipient of the **Dr. Suat Günsel Honor Award Gold Medal**, is internationally recognized for his expertise in AI and the IoT. At **Near East University**, he leads pioneering research that shapes the future of intelligent technologies, while inspiring the next generation of scientists through innovative teaching and academic leadership.

[read more](#)

Symposium

For All Women and Girls: Rights, Equality, and Empowerment

As part of the International Women's Day events, **Near East University's Gender Research and Application Center** organized a symposium exploring gender equality from legal, economic, political, and educational perspectives. The event featured expert panels, a documentary screening, and discussions on the role of women in media and gastronomy, bringing together voices from academia, journalism, and civil society.

FOR ALL WOMEN AND GIRLS: RIGHTS, EQUALITY, AND EMPOWERMENT



NEAR EAST UNIVERSITY
GENDER RESEARCH AND APPLICATION CENTER

[read more](#)

STUDENT DEANSHIP



The Dean of Students Office at **Near East University** plays a key role in creating an inclusive and supportive campus environment. **Prof. Dr. Dudu Özkum Yavuz** shares her perspective on student well-being, community building, and the values that shape university life.

[read more](#)

interview

senior researcher

Prof. Dr. İlker Etikan, an experienced academic in the field of biostatistics. In this conversation, he reflects on the development of biostatistics in Türkiye, its role in medical research, and how data continues to shape health sciences.

[read more](#)

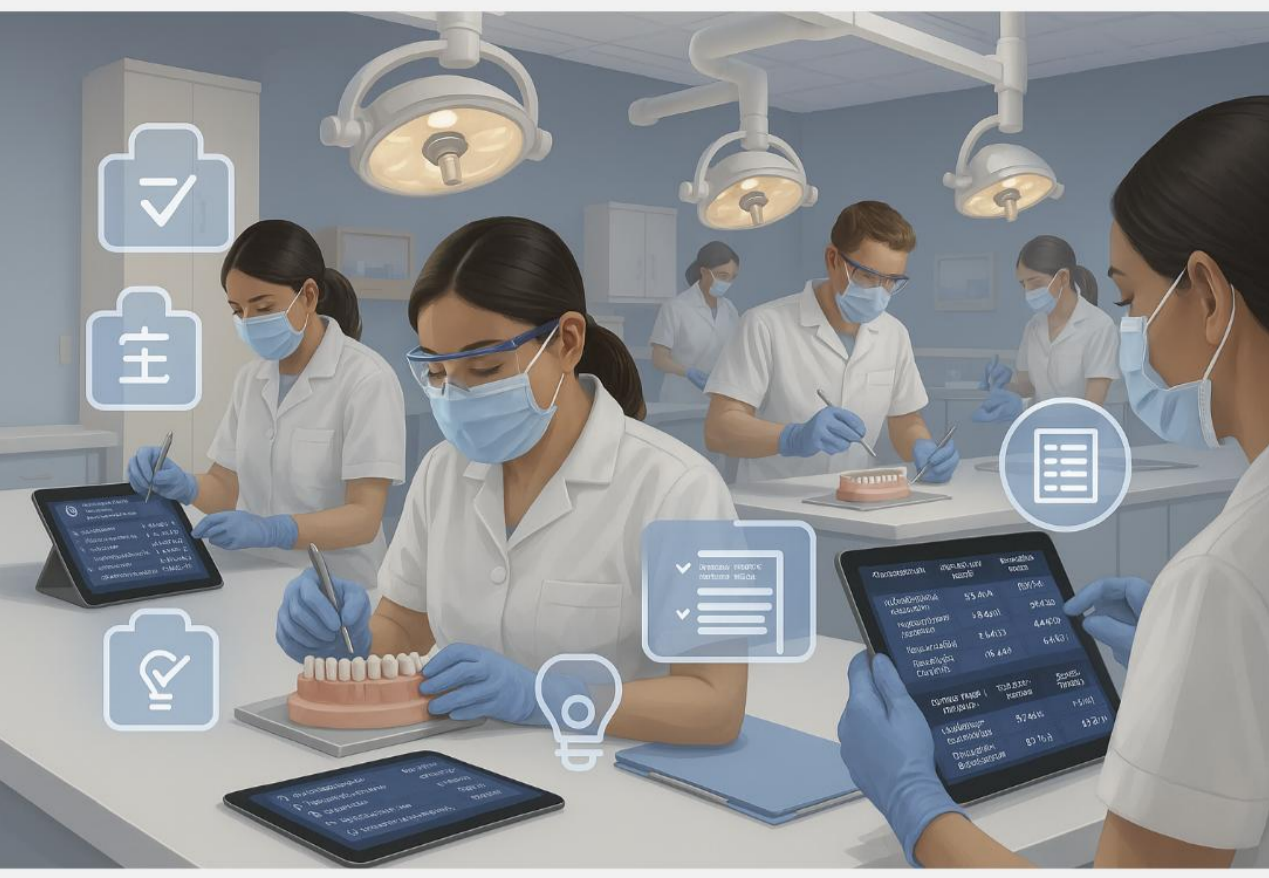
YOUNG RESEARCHER

Assoc. Prof. Dr. Mehdi Seraj works on environmental economics, exchange rate dynamics, and financial development. With a background in both engineering and economics, his research bridges theory and policy in impactful ways.

[read more](#)



WHAT'S NEW IN EDUCATION

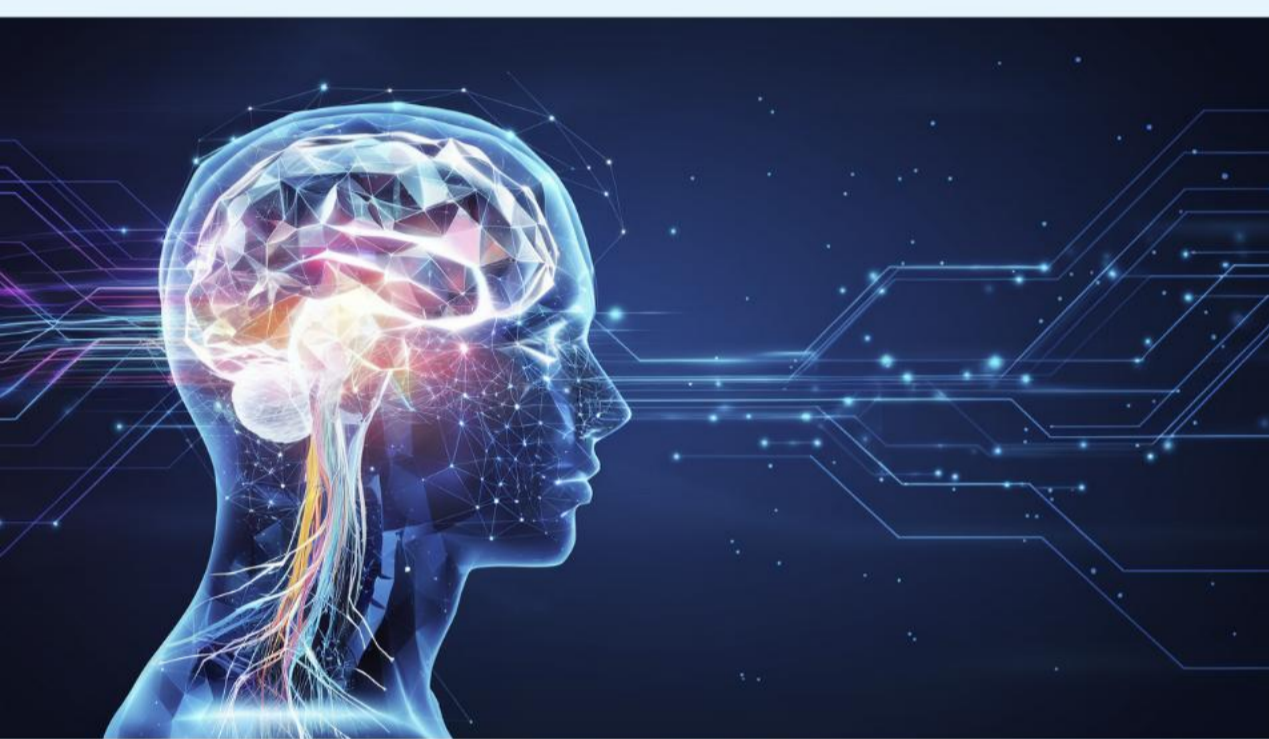


Structured Assessment in Dental Education: The Role of E-Rubrics

Electronic rubrics (e-rubrics) offer a digitally enhanced approach to assessing clinical competencies in dental education. By providing structured, transparent, and accessible evaluation criteria, e-rubrics support objective feedback, promote student reflection, and strengthen learning outcomes in and practical courses.

[read more](#)

STUDENT CLUBS



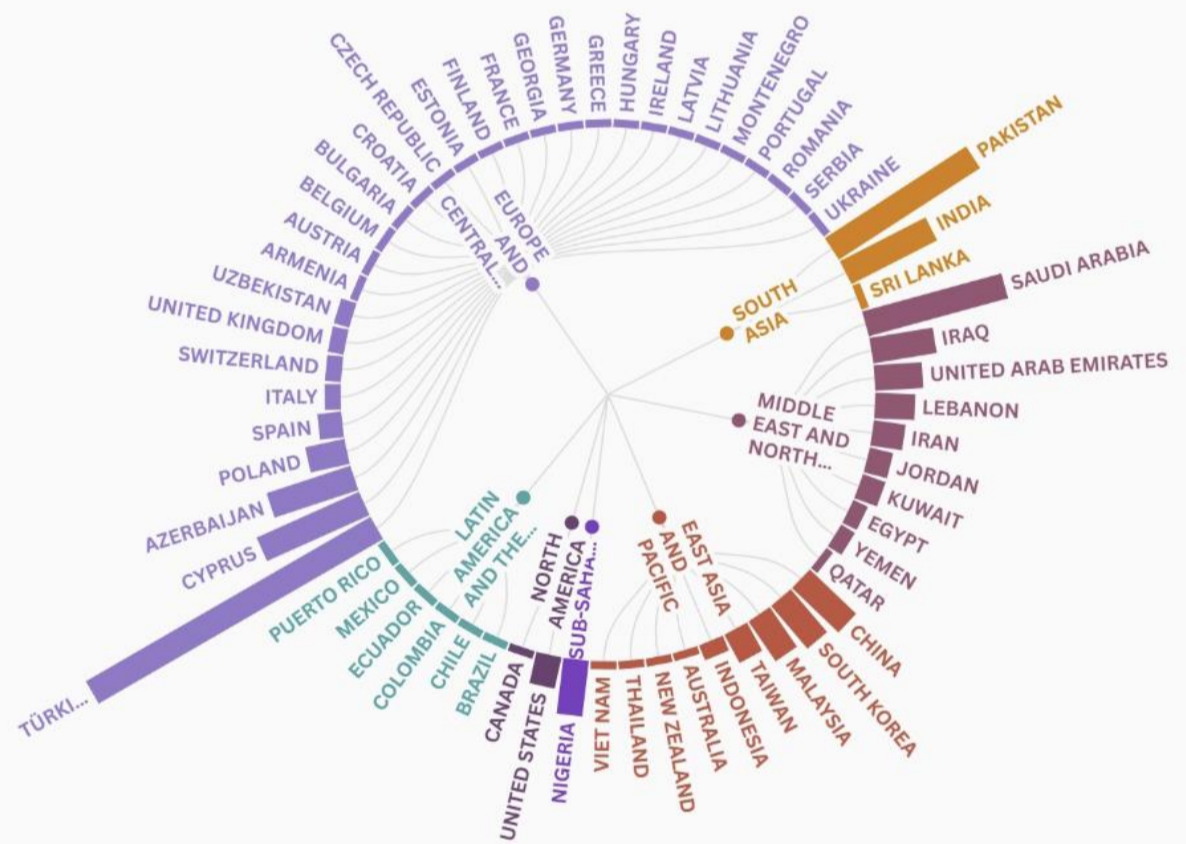
Code Crafters

Bringing together students from across disciplines, Code Crafters is **Near East University's** first international software development club. Through hands-on events on AI, cybersecurity, and more, members gain valuable skills and experience in a supportive community.

[read more](#)

COLLABORATIONS

Near East University engages in collaborations with institutions and researchers worldwide, supporting knowledge sharing and multidisciplinary studies. These partnerships contribute to the advancement of science and education, highlighting the university's dedication to progress.



NEAR EAST UNIVERSITY: GLOBAL COLLABORATION NETWORK
MARCH - APRIL 2025

[read more](#)

NEU IN RANKINGS



[read more](#)

EDITORIAL TEAM

Advisor

Prof. Dr. Mustafa Kurt

Content Editors and Designers

Prof. Dr. Umut Aksoy & Prof. Dr. Sevcan Kurtulmuş Yılmaz



Near East University

Near East Boulevard ZIP: 99138 Nicosia / Northern Cyprus