



research · education · art · innovation

NEU BULLETIN

YEAR 2025

ISSUE #8

NEAR EAST UNIVERSITY

WORLD UNIVERSITY  
RANKINGS 2026THE Times  
Higher  
Education

WE ARE AMONG

THE  
WORLD'S  
TOP

500

UNIVERSITIES!

neu.edu.tr

## THE WUR 2026 Announced

Near East University has achieved a remarkable rise in the **Times Higher Education World University Rankings 2026**, advancing to the **401-500 global band**—up from last year's 601-800 position. This significant progression reflects the university's strengthened research ecosystem, growing international visibility, and commitment to academic excellence. With a particularly strong performance in Research Quality, where the university ranked among the top 400 worldwide, Near East University continues to expand its global impact through high-quality publications, international collaboration, and innovative research outputs.

[Read More](#)

## Leadership Interviews

**Chairman of the Board of Trustees: Prof. Dr. İrfan Suat Günsel**



Near East University's entry into the top 500 in the THE WUR 2026 rankings represents not only academic performance, but a long-term institutional vision shaped by strategic leadership, investment, and an expanding innovation ecosystem.

In this exclusive interview, **Prof. Dr. İrfan Suat Günsel** discusses the vision that guided this transformation — from building a science-driven university culture to developing the broader Near East structure that integrates research, culture, technology, and societal impact.

He also reflects on the future horizon: Near East University's role in positioning Northern Cyprus as a rising hub of science, art, and technology, and the ambitions that will define the next decade of institutional growth and international influence.

[Read More](#)

**Rector: Prof. Dr. Tamer Şanlıdağ**

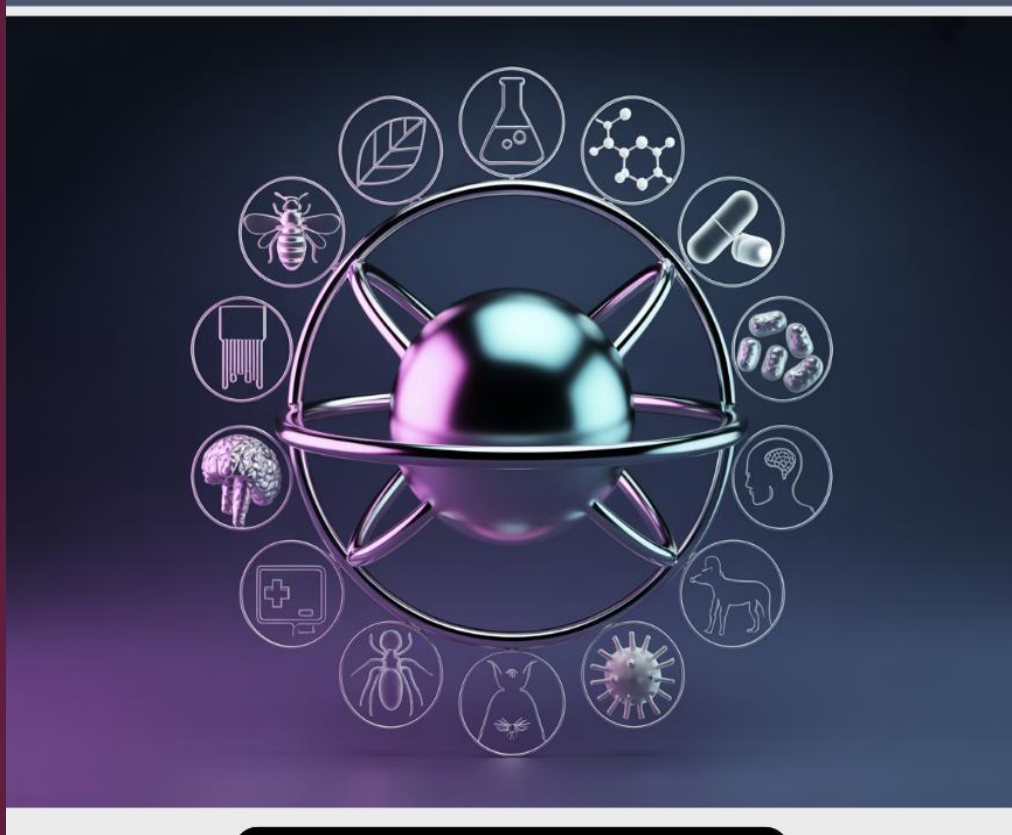
The journey that has positioned Near East University among the world's top 500 universities reflects years of strategic planning, academic commitment, and institutional transformation. **Rector Prof. Dr. Tamer Şanlıdağ** has been a key driving force in this process, guiding initiatives that strengthen research quality, interdisciplinary collaboration, and international engagement.

In this interview, Prof. Dr. Şanlıdağ shares a comprehensive assessment of the academic strategies behind this success, addressing the role of research infrastructure, high-impact publications, and long-term sustainability. He also outlines the university's vision for continued growth as a regional center of science, technology, and education.


[Read More](#)

## Research Center

### DESAM Research Institute


[Read More](#)

Researchers at Near East University continue to generate impactful knowledge through the interdisciplinary work of **DESAM Research Institute**. Bringing together expertise from diverse scientific fields, DESAM supports innovative research that addresses both local and global challenges. Its teams work collaboratively to produce evidence-based insights, develop practical solutions, and contribute to improved quality of life.

Through internationally visible research, strong academic partnerships, and a commitment to scientific excellence, DESAM plays a leading role in advancing knowledge and driving societal impact.



## Trending research

### Electrical & Electronic Engineering

Nonlinear energy modeling for UAVs in critical missions using multiplicative calculus

### Computer Science

Rainfall prediction using stacked deep learning networks

### Business Administration

Volatility and return connectedness across decentralized finance assets, precious and industrial metals, green energy and technology markets

### Medicine

The effect of humeral head depressor strengthening on individuals with subacromial impingement syndrome

[Read More](#)



## seminar

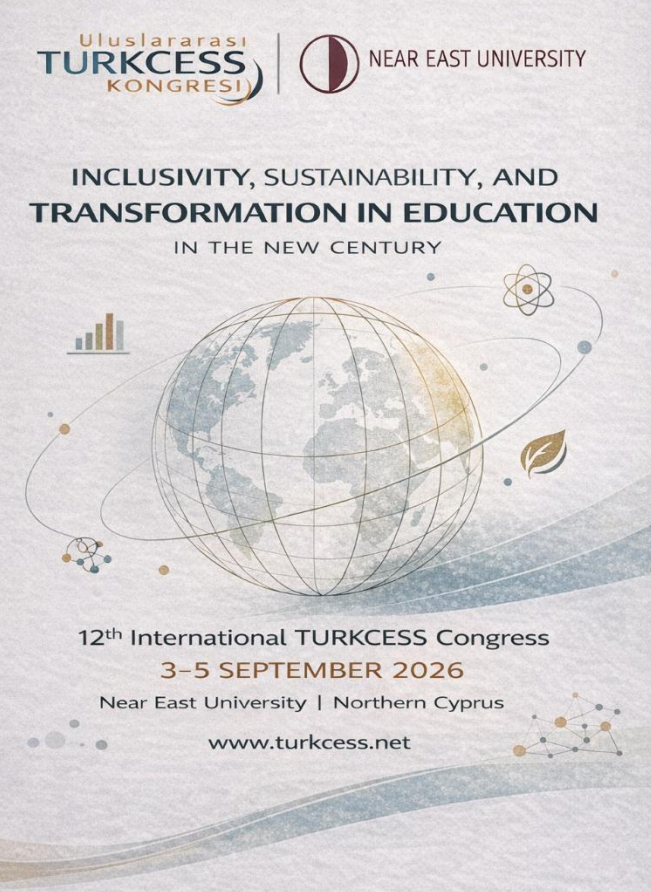
**Near East University** hosted **Prof. Dr. Burcu Özsoy**, one of Türkiye's leading polar scientists, for a seminar on "Polar Regions and Climate Change."

Drawing on insights from 18 polar expeditions, Prof. Dr. Özsoy shared critical observations on glacier loss, shifting climate systems, and the global implications of rapid environmental change. The event brought together academics, students, and the wider community, highlighting the role of science in addressing the climate crisis.



[Read More](#)

## congress announcement



**Join Us at TURKCESS 2026: A Global Forum on Education and Social Sciences**

**12th International TURKCESS Congress on Education and Social Sciences** will be hosted by **Near East University** in Northern Cyprus from **3-5 September 2026**. Bringing together scholars from more than 20 countries, the congress will focus on Inclusivity, Sustainability, and Transformation in Education in the New Century, offering a vibrant platform for interdisciplinary academic exchange and international collaboration.

[Read More](#)

## GünSel art museum



The **GünSel Art Museum**, newly relocated to the GünSel Tower, continues to enrich our campus with its modern vision and dynamic cultural presence. In our meeting with Museum Director **Prof. Erdoğan Ergün**, we explored the museum's mission to preserve artistic heritage, support contemporary production, and offer students a unique learning environment where art and education meet.

Featuring works that span 4,000 years of Cypriot history alongside contemporary painting, sculpture, ceramics, printmaking, video art, and the exhibition of GÜNSEL, the museum serves as a vibrant cultural hub at the heart of our university.

[Read More](#)

## Award winning Academics

**Prof. Dr. Zehra Altınay & Prof. Dr. Fahriye Altınay**

As leading scholars whose shared academic vision has shaped impactful research, social responsibility initiatives, and innovative educational practices, professors have made significant contributions across multiple fields. Their award-winning work in social sustainability, equity, and community engagement reflects a deep commitment to addressing societal needs through research-informed action. This exclusive interview explores the values that guide their journey, the impact of their projects, and their aspirations for the future.



[Read More](#)

## artademics



**Between hand-drawn lines and digital layers lies a rich visual world**

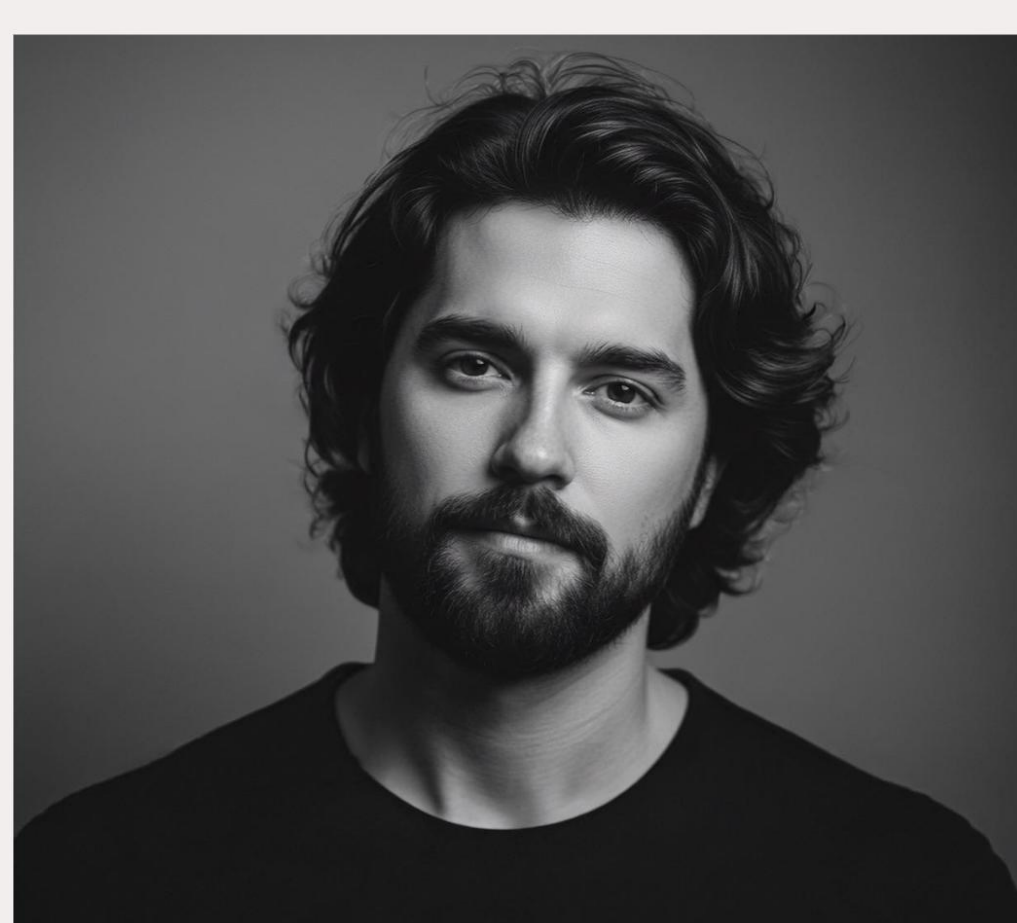
In this Artademics interview, artist-academic **Assoc. Prof. Mine Okur** reflects on her creative journey from graphic design to printmaking and mixed techniques. She shares insights into her artistic process, sources of inspiration ranging from mythology to historical imagery, and her holistic approach to visual storytelling shaped by both hand-drawn and digital practices.

[Read More](#)

## alumni SPOTLIGHT

*What begins with a dream can travel far beyond borders.*

**Award-winning filmmaker** and **NEU alumnus Gökalp Yamen** shares his journey from early short films to international festivals, offering honest insights into creativity, courage, and independent cinema. In this interview, he reflects on the moments that shaped his cinematic voice, the challenges of building a career with limited resources, and the stories that continue to drive his work. He also shares his perspective on storytelling as a powerful tool for connection and change.



[Read More](#)

## Recent Publications



**Near East University** researchers continue to tackle significant global and local challenges through strong interdisciplinary collaboration and scientific rigor. Bringing together expertise from multiple fields, they develop innovative and practical solutions that respond to societal needs. Their work not only advances scientific knowledge but also informs evidence-based policies and contributes to improved quality of life – extending the university's impact well beyond its borders.

[Read More](#)



# STUDENT SCIENTIFIC PLATfORMS



The 1st International IVSA Cyprus Student Congress brought together veterinary students and academics from multiple countries for scientific exchange and student-led research presentations. The congress offered an international platform where young researchers engaged with contemporary topics, emerging technologies, and interdisciplinary approaches in veterinary medicine.

[Read More](#)



The NCADS Student Symposium & Dentistry Fall Symposium 2025 brought together scientific sessions, student presentations, and social activities, highlighting student engagement, evidence-based education, and academic collaboration. The event provided a dynamic academic environment that supported interdisciplinary learning within dentistry.

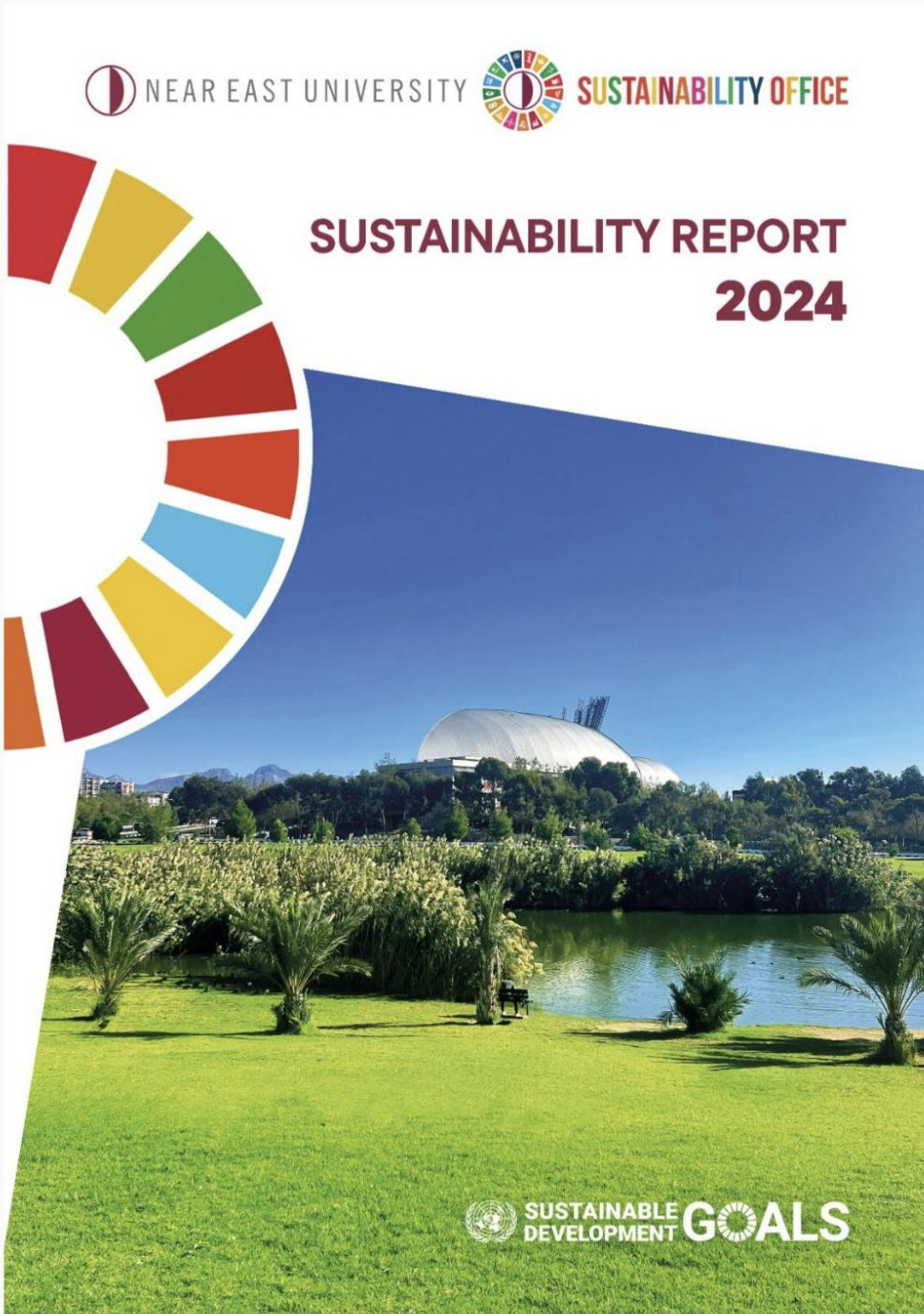
[Read More](#)

## SUSTAINABILITY

Near East University has published its 2024 Sustainability Report, outlining the institution’s strategic actions in environmental stewardship, social responsibility, and sustainable campus development. **Ranked 43rd globally in the Times Higher Education Impact Rankings 2025**, the university continues to demonstrate leadership in sustainability-driven performance across education, research, and societal impact. Highlighting measurable improvements and future priorities, the 2024 Sustainability Report reflects the university’s continued commitment to a sustainable world.

The full report is now available through the Sustainability Office’s web site.

[Read More](#)



## NEU IN RAnKINGS



**Times  
Higher  
Education**



*University Ranking by  
Academic Performance*

[Read more](#)

### EDITORIAL TEAM

#### Advisor

Prof. Dr. Mustafa Kurt

#### Content Editors and Designers

Prof. Dr. Umut Aksoy & Prof. Dr. Sevcan Kurtulmuş Yılmaz



**Near East University**

Near East Boulevard ZIP: 99138 Nicosia / Northern Cyprus